

Manesar Anti-terror 2022 and SCO

❖ Context

- India is currently hosting the **multilateral Joint Anti-Terror Exercise (JATE) 'Manesar Anti-terror 2022'** under the ambit of the **Shanghai Cooperation Organisation (SCO) Regional Anti-Terrorism Structure** scheduled from October 8 to 13, 2022.



❖ Key Highlights

- It is being conducted at the **NSG Manesar Garrison**.
- JATE is an **annual Counter Terrorist Exercise** held within the framework of the SCO RATS.
- It is **stage 2** of the exercise.
- **Stage 1** of the Exercise was conducted from July 27 to August 1 by the National Counter Terrorist Forces of SCO Member Countries in their respective territories.
- **Aim :**
 - To **exchange expertise, and best practices and build synergy** between the Counter Terrorism Forces of the SCO RATS Member Countries.
 - To **enhance capabilities for conducting Anti-Terrorist operations** and countering other security threats collectively.

❖ SCO

- It is a Eurasian **political, economic and military organization**.
- It was preceded by the **Shanghai Five mechanism (1996)** formed by the leaders of China, Russia, Kazakhstan, Kyrgyzstan, and Tajikistan.
- It was rechristened as the SCO in 2001.
- The SCO **entered into force on 19 September 2003**.
- SCO **covers 40 percent of the global population**.
- The SCO's **official languages are Russian and Chinese**.



• Aims:

- Security-related concerns
- Resolving border issues
- Military cooperation
- Intelligence sharing
- Countering terrorism
- Countering American influence in Central Asia

• Members:

- China, India, Kazakhstan, Kyrgyzstan, Russia, Pakistan, Tajikistan, and Uzbekistan.

North Eastern Council (NEC)

❖ Context

- Recently, the **two-day plenary session** of the **North Eastern Council (NEC)** attended by Union Home Minister concluded in Guwahati.



❖ North Eastern Council (NEC)

- **About :**
 - It is a **statutory organization** established under the **North Eastern Council Act, of 1971**.
 - The NEC act has been **amended in 2002 to add Sikkim** and restructure it as the **regional planning body** for the North Eastern Region.
 - Initially it was an Advisory Body for North Eastern Region (NER).
- **The Constituent States :**
 - Arunachal Pradesh, Assam, Manipur, Meghalaya, Mizoram, Nagaland, Sikkim, and Tripura.
- **Members :**
 - The Council comprises Governors and Chief Ministers of constituent States and three members nominated by the President.

- **Chairman** - Union Home Minister, Amit Shah.
- **Headquarter** - Shillong
- **Ministry** - Ministry of Development of North Eastern Region
- **Funding:**
 - The funding of the council mainly **lies with the central government** with small portions contributed by the state governments as well.
- **Functions:**
 - It is the **nodal agency for the economic and social development** of the North Eastern Region.
 - It is an **apex-level body for securing balanced and coordinated development** and facilitating coordination with states.
 - The Council is an **advisory body** and may discuss any matter in which the northeastern states have a common interest and advise the Central Government as to the action to be taken on any such matter.

The Global Forest Sector Outlook 2050

❖ Context

- Recently the report titled "The global forest sector outlook 2050: Assessing future demand and sources of timber for a sustainable economy" was released by the United Nations Food and Agriculture Organization (FAO).



Face to Face Centres

❖ Key Highlights

- Demand for wood products like mass timber and man-made cellulose fibre used as substitutes for non-renewable materials may increase by up to 272 million cubic metres by 2050.
- In developing countries, it will lead to the creation of around 1 million jobs.
- The global threats to climate, biodiversity and a healthy environment are mainly caused by the excessive use of non-renewable materials.
- The report aims to identify the potential supply gaps and needs in forest industries in roundwood production, investments and employment.

- It further predicted that industrial roundwood (IRW) is prone to uncertainties arising from climate change-driven policy interventions in naturally regenerated production forests as well as the productivity and expansion of planted forests.
- Future demands for IRW may be met by a combination of planted forests especially from the Global South and naturally regenerated temperate as well as boreal forests, the analysts noted.
- The global consumption of fuelwood from forests in 2050 can range from 2.1-2.7 bcm, compared to 1.9 bcm in 2020 — an 11-42 per cent rise.
- In 2020, around 2.3 billion people relied on wood-fuel as their primary source of energy for cooking and heating, the report stated. These will remain the main sources of energy for households in emerging economies till 2050.

National Payments Corporation of India (NPCI)

❖ Context

- NPCI has launched NPCI Partner Program (NPP) to collaborate with various Technological Service Providers (TSP), Application Service Providers (ASP), and other similar entities in the industry.



❖ Key Highlights

- The NPCI, an umbrella organisation for operating retail payments and settlement systems in India, aims to connect with innovative and important payments-oriented service providers, per an NPCI statement.
- This initiative would help in build new offerings better aligned with the needs and demands of the contemporary market.
- The program aims to augment the retail payments ecosystem by reducing the time to market and being more transparent and accessible.

- The program will also act as a knowledge-sharing platform with exclusive workshops on NPCI products and services, participation in NPCI pilot projects, and building a marketplace through community engagement.
- It will further enable service providers to co-create along with NPCI and will accelerate strategic partnerships within the ecosystem which will play a vital role in solving new challenges in the ever-evolving market dynamics of cash-free payments.
- The program will seek participation from payment technology-oriented organisations across the ecosystem.
- These entities will first be evaluated for their fitment and compliance, post which they can apply for pre-certification of their tech stack on NPCI platforms.

Food Safety and Standards Authority of India (FSSAI)

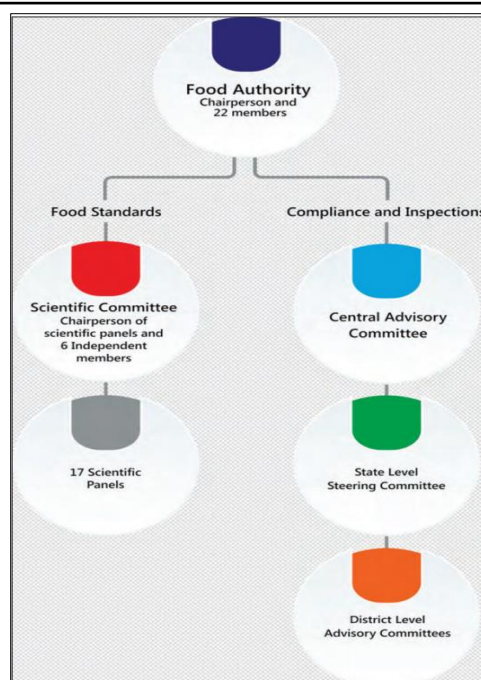
❖ Context

- Foreign food manufacturing facilities exporting certain “high-risk” categories to India need to mandatorily be registered with the Food Safety and Standards Authority of India (FSSAI) effective February 1, 2023.



❖ Key Highlights

- The categories identified for mandatory registration includes **milk and milk-based** products, meat and meat products including poultry and fish, infant nutrition, nutraceuticals and egg powder.
- As per regulations, these international food factories can be subjected to inspections and their registration **can be cancelled** or suspended if found to be non-compliant with Indian food safety standards.



❖ About FSSAI

- FSSAI has been established under Food Safety and Standards, 2006 which consolidates various acts & orders that have hitherto handled food related issues in various Ministries and Departments.
- FSSAI has been created for laying down science based standards for articles of food and to regulate their manufacture, storage, distribution, sale and import to ensure availability of safe and wholesome food for human consumption.
- Ministry of Health & Family Welfare, Government of India is the Administrative Ministry for the implementation of FSSAI.
- The Chairperson is in the rank of Secretary to Government of India.

Face to Face Centres



Indian Space Economy Set to Grow

❖ Context

➤ Indian space economy is set to reach \$13 billion by 2025, according to the recent reports.

❖ Key Highlights

- The availability of low-cost satellite launch vehicles coupled with mass production will lead to demand from customers around the world.
- Several companies are utilising cutting-edge technologies to develop innovative launch solutions in India and have built considerable expertise around the launch of **(Low Earth Orbit)LEO, (Medium Earth Orbit)MEO and (Geostationary Earth Orbit)GEO** satellites and orbit management solutions.
- The space launch segment would grow fastest at a CAGR of 13% spurred by growing private participation, latest technology adoption and low cost of launch services.
- Satellite services and application segment would form the largest share of the space economy accounting for 36% of the space economy by 2025.
- There are over 100 space tech start-ups in the country and investments in space tech start-ups increased 196% y-o-y in 2021.

EY-ISpA Report

Indian space economy to rise to \$13 b by '25 at 6% CAGR

India accounted for 2.6% of global space economy in 2020

This amounted to \$9.6 b, which was 0.5% of GDP



Satellite services, application to comprise 36% of space economy by 2025

Space launch likely to grow fastest by '25 at 13% CAGR

- **Country's satellite manufacturing opportunity:** In 2020 it was \$2.1 billion and this would reach \$3.2 billion by 2025, by 2025, satellite manufacturing would be the second fastest-growing segment in the Indian space economy.

- Space parks that are coming up across the country would give a fillip to companies operating across the space value chain, especially manufacturing.
- **The private industry's role** is set to create a revolution in the current value chain of the Indian space economy.

News in Between the Lines

PM-National Apprenticeship Melas



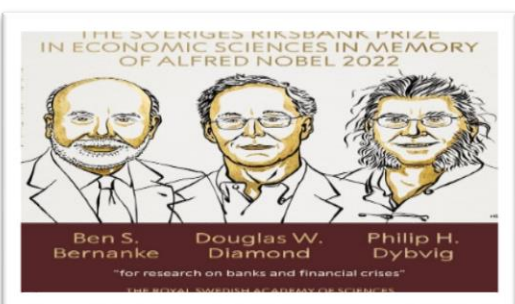
❖ Context

➤ The **Ministry of Skill Development and Entrepreneurship** is organizing PM National Apprenticeship Melas across **280 locations in 28 states and UT's**.

❖ About PM-National Apprenticeship Melas

- Apprenticeship Melas are **held on the second Monday of each month** to increase the employability of India's youth.
- **Aim:**
 - To **provide local youth with the opportunity to shape their careers** through apprenticeship training and get employed.
 - The **participating companies will have the chance to meet potential apprentices** on a single platform and choose applicants on the spot.
 - Following the completion of the programs, **the company** which is providing the training is **likely to hire the student as an employee**.
- **Eligibility:**
 - To be selected for the training, a candidate must have a 5th-12th grade pass certificate, a skill training certificate, an ITI Diploma, or a graduate degree.
- **Significance:**
 - The **government is striving to train 1 million youth per annum** through apprenticeship training and to fulfill this mission, PMNAM is being used as a platform to increase the participation of establishments and students.

2022 Nobel Prize in Economics



❖ Context

➤ Recently, the **Sveriges Riksbank Prize in Economic Sciences 2022** (Nobel Prize for Economics 2022) is awarded by the Royal Swedish Academy of Sciences.

❖ Key Highlights

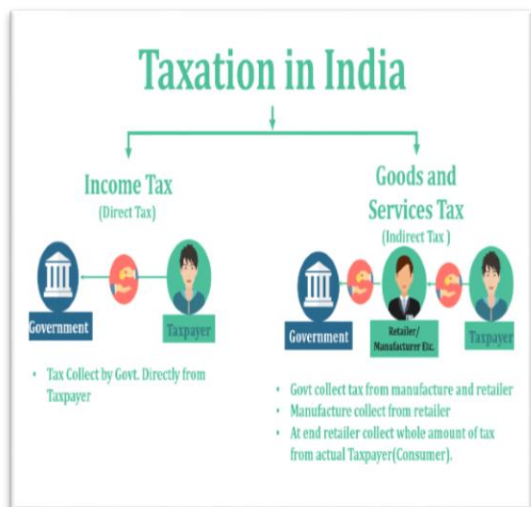
- **Ben S. Bernanke, Douglas W. Diamond and Philip H. Dybvig** won the 2022 Nobel Prize in Economics for research on banks and financial crises.
- **Contribution :** They have significantly **improved our understanding of the role of banks in the economy**, particularly during financial crises.
 - An important finding in their research is **why avoiding bank collapses is vital**.

Face to Face Centres



- The work for which **Bernanke** is being recognized was formulated in an article in 1983, which analyzed the **Great Depression of the 1930s**.
- Douglas Diamond and Philip Dybvig have created **theoretical models explaining the reason for the existence of banks**.
- **About the Award:** The Sveriges Riksbank established the award in **1968**.
 - The Royal Swedish Academy of Sciences was given the task of selecting the Laureates in Economic Sciences, **starting in 1969**.

Direct Tax



❖ Context

- India's **net direct tax collections** till October 8 in the financial year 2022-23 have **risen to ₹7.45 lakh crore**, more than half of the Budget targets.

❖ Key Highlights

- It is an **increase of 16.3%** over the tax inflows during the corresponding period a year ago.
- **Net personal income tax** collections grew 17.35%, rising faster than corporate income tax collections that were up 16.29% net of refunds.

❖ About Direct Tax

- It is **levied directly on the taxpayer** and paid directly to the government by those who are subjected to it.
- **Levying and Collecting Agency of Direct Tax** : Central Board of Direct Taxes
- Direct Tax is one of the two **main sources of revenue for the government**. The indirect tax is the other.
- Every fiscal year, **direct taxes account for roughly half of the govt's revenue**.
- **Types of Direct Tax:** Income Tax, Corporation Tax, Minimum Alternate Tax, Capital Gain Tax, Securities Transaction Tax, Commodities Transaction Tax, Estate Duty, Wealth Tax, Gift Tax

Skilling in Non-Traditional Livelihood for Girls



❖ Context

- Women, Child Development Ministry to organize National Conference on Skilling in Non-Traditional Livelihood for Girls - **Betiyan Bane Kushal**.

❖ Key Highlights

- The conference will be organized under the **Beti Bachao Beti Padhao** initiative on the occasion of the International Day of the Girl Child.
- Under the **Betiyan Bane Kushal** initiative, emphasis will be laid on convergence between Ministries and Departments to ensure the skill development of girls.
- The conference will focus on capacity building and skill development of girls to increase their participation in the professions like science, technology, engineering and mathematics.
- During the event, MoUs will be signed between the Ministry of Skill Development and Entrepreneurship and Ministry of Minority Affairs for Skilling of young Girls for their increased, equal, and empowered participation in the workforce.

24x7 Tele-Mental Health Service



[Daily Current Affairs](#)

[Daily Pre PARE](#) [Daily MCQ Quiz](#)

❖ Context

- Recently the Union Health Ministry has launched a 24x7 tele-mental health service called **Tele Mental Health Assistance and Networking Across States (Tele-MANAS)**.

❖ Key Highlights

- The service will start with 20 states and UTs and will subsequently be expanded to the entire country. **Tele-MANAS** aims to increase access to mental healthcare across the country, including the hard-to-reach areas.
- The country-wide network will provide counselling, consultation with a specialist, and e-prescriptions. The service can be accessed by calling the helpline number 14416 and 1-800-91-4416. Callers will first reach an Interactive Voice Response System (IVRS) and then be transferred to a trained counsellor in their areas.
- The nodal centre for **Tele MANAS**, which will be the digital arm of the National Mental Health Programme, will be **National Institute of Mental Health and Neuroscience (NIMHANS)** with technological support from IIT-Bombay.

Face to Face Centres

